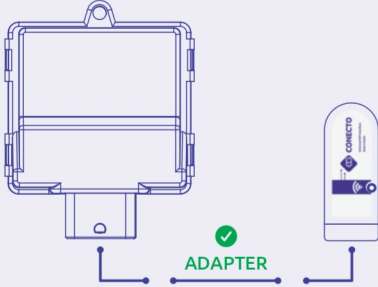


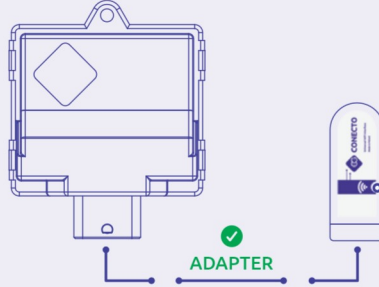
Podłączenie i konfiguracja interfejsu EG CONECTO ze sterownikami EuropeGAS.
Connection and configuration EG CONECTO interface with EuropeGAS controllers.

1.

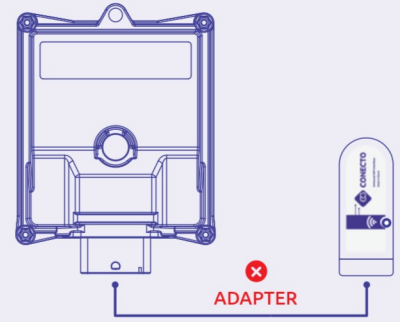
EG BASICO 24.4



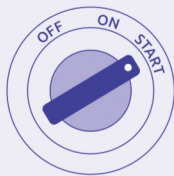
EG AVANCE 32.4



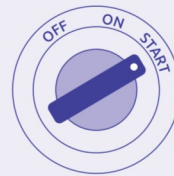
EG AVANCE 48.4 / 48.6 / 48.8
EG SUPERIOR 48.8



2.



lub
or

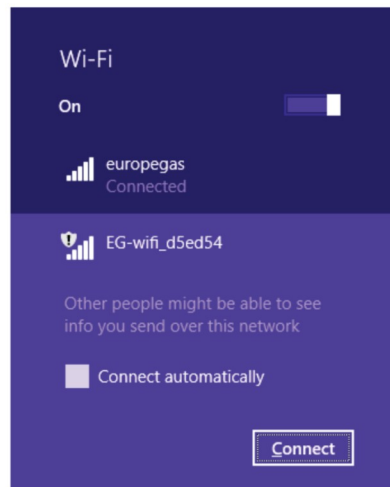
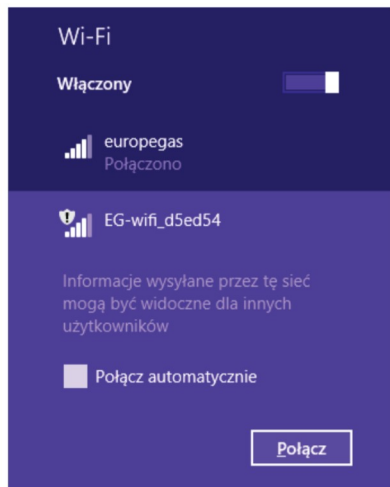


lub
or



3.

Łączenie z WiFi
WiFi connecting



4.

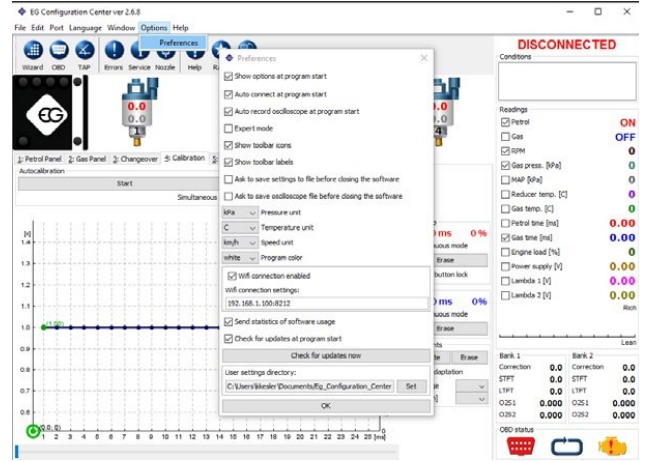
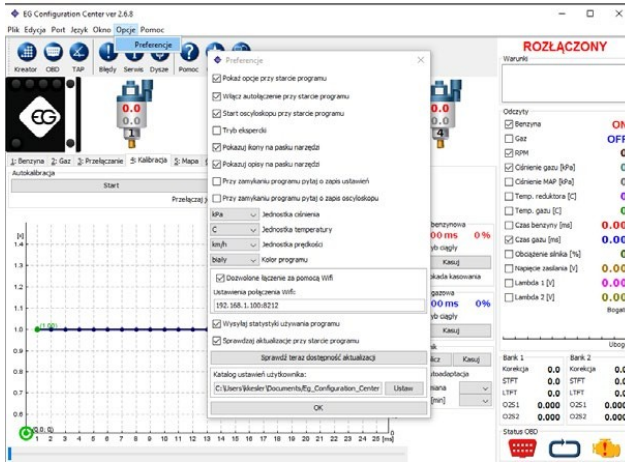
Uruchomienie EG Configuration Center
Run EG Configuration Center



5.

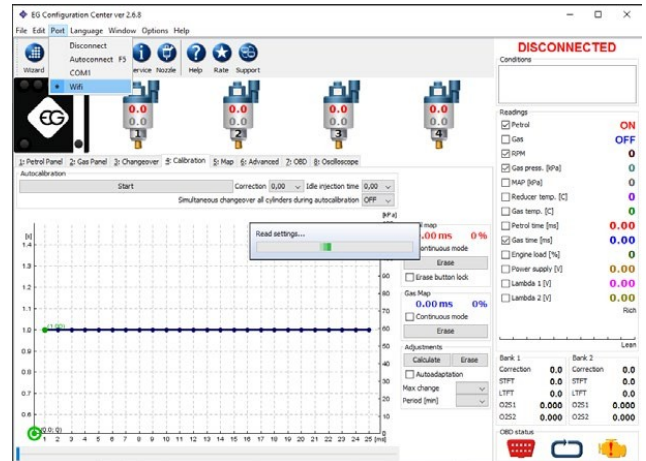
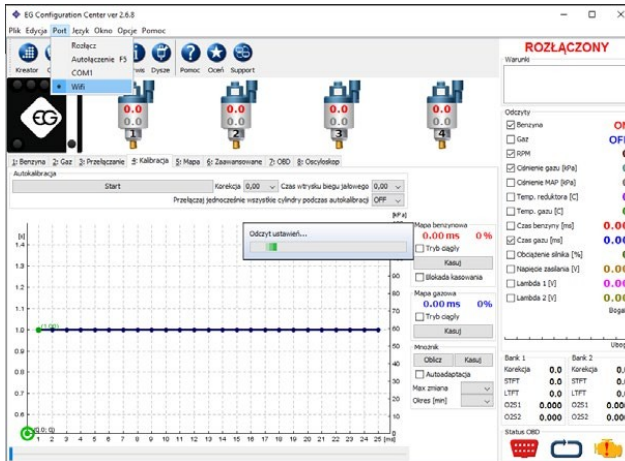
Opcje > Preferencje
• włącz „Dozwolone łączenie za pomocą WiFi”

Options > Preferences
• turn on „WiFi connection enabled”



6.

Port > WiFi
Port > WiFi



W przypadku pytań prosimy o kontakt:
In case of questions please contact:

technical@europegas.pl

LPG/CNG solutions